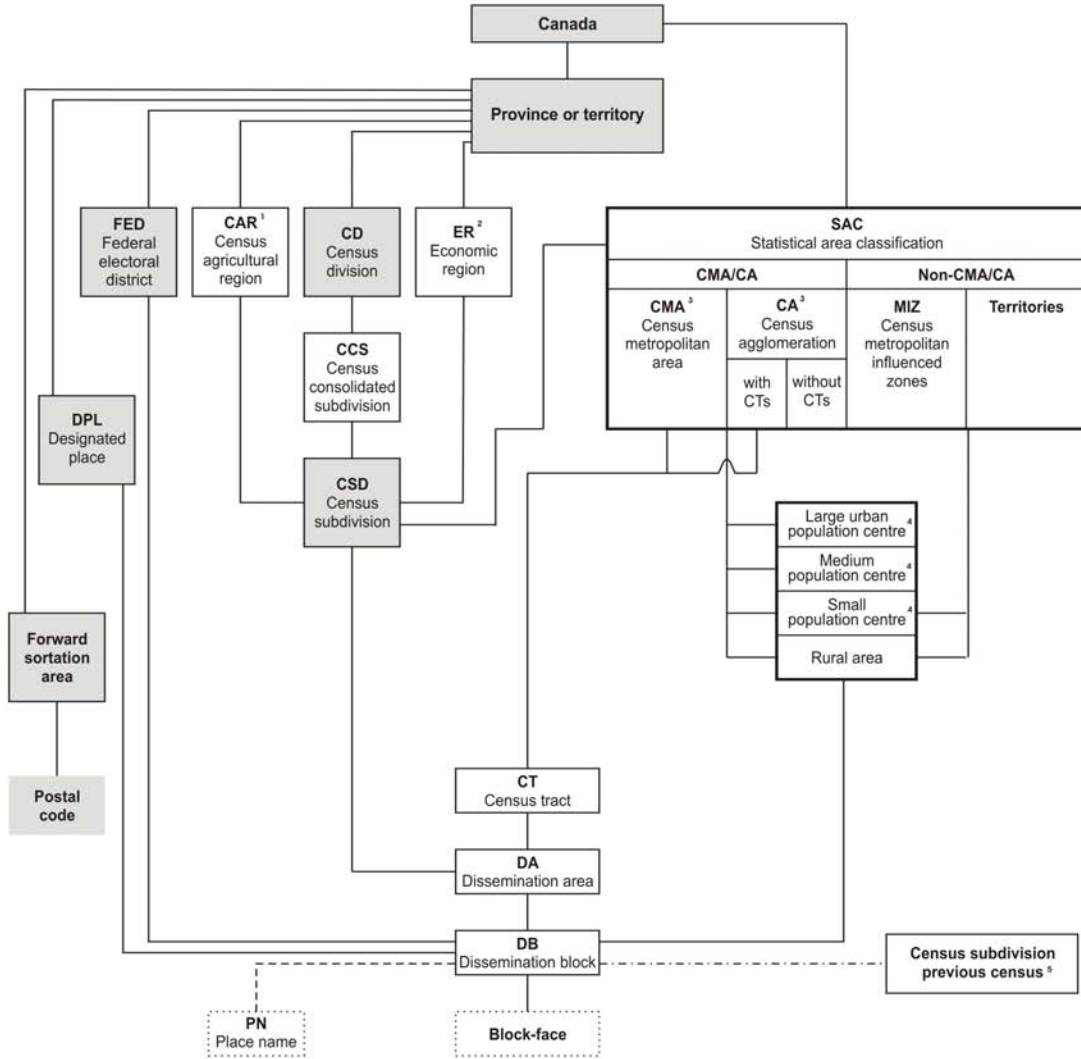


## Appendix B Hierarchy of standard geographic units for dissemination, 2011 Census

Figure B.1 Hierarchy of standard geographic units for dissemination, 2011 Census



- 1. Census agricultural regions in Saskatchewan are composed of census consolidated subdivisions.
  - 2. Economic regions are composed of complete census divisions except for one CD in Ontario.
  - 3. One CMA and three CAs cross provincial boundaries.
  - 4. Five population centres (POPCTRs) cross provincial boundaries.
  - 5. A best fit linkage is created between the previous census CSDs and the current census dissemination blocks to facilitate historical data retrieval.
- Administrative area
  - Statistical area
  - Polygon
  - Representative point
  - Best fit linkage
  - Linkage using point-in-polygon process

Sources: Statistics Canada, 2011 Census of Population; Canada Post Corporation, May 2011.